

# DecoClad<sup>®</sup> FRL-/30/30

**Installation Guide**

# Introduction

NOTE: This guide is intended to be read in conjunction with the DecoClad® installation guide.

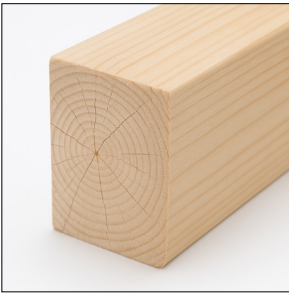
## Performance

All testing for DecoClad® systems in fire prone zones has been carried out in accordance with AS 1530.4 to achieve FRL-/30/30.

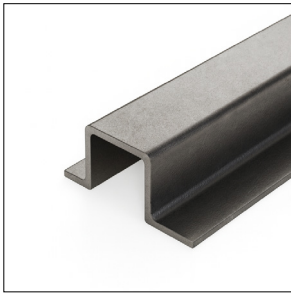
To achieve the fire performance results stated in this guide, the building preparation for the DecoClad® system must be installed as detailed here. Variation from this guide may reduce its fire resistance.

This guide outlines the installation method used for testing performed by Ignis Labs, test number: IGNL-9337-04C-I01-R00.

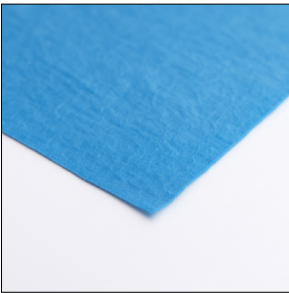
## Building Materials Required



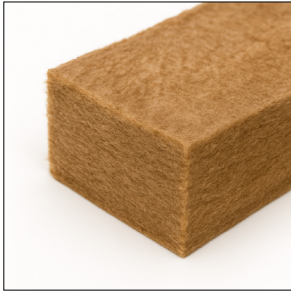
90 x 45mm Timber Framing



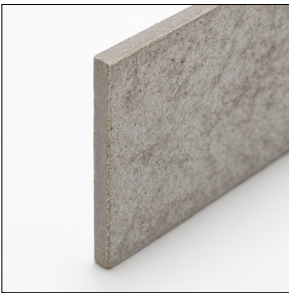
Steel Top Hats



Fire Resistant Sarking



Fire Rated Insulation (R 2.0 minimum)



9mm Fibre Cement Sheet



13mm Fire Rated Plasterboard

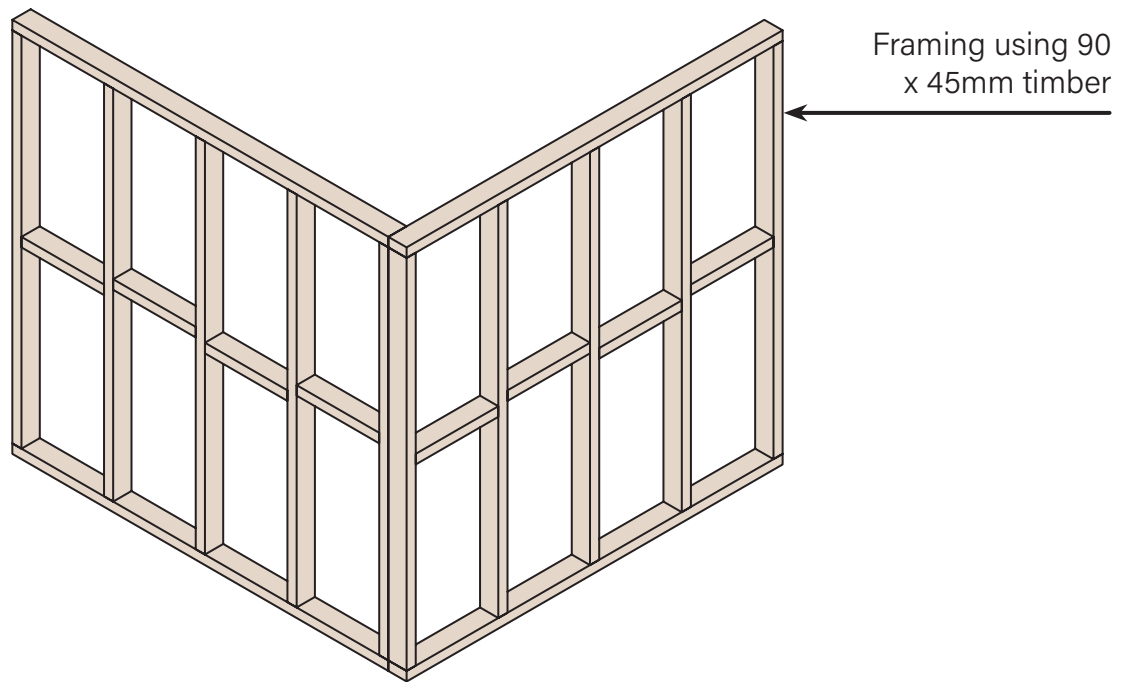
\*All materials must be installed in accordance with the manufacturer's specifications.

# DecoClad® FRL-/30/30 Installation

1

## Build Frame for Cladding

The framing structure must be constructed in accordance with NCC standards for framing in a fire rated zone.

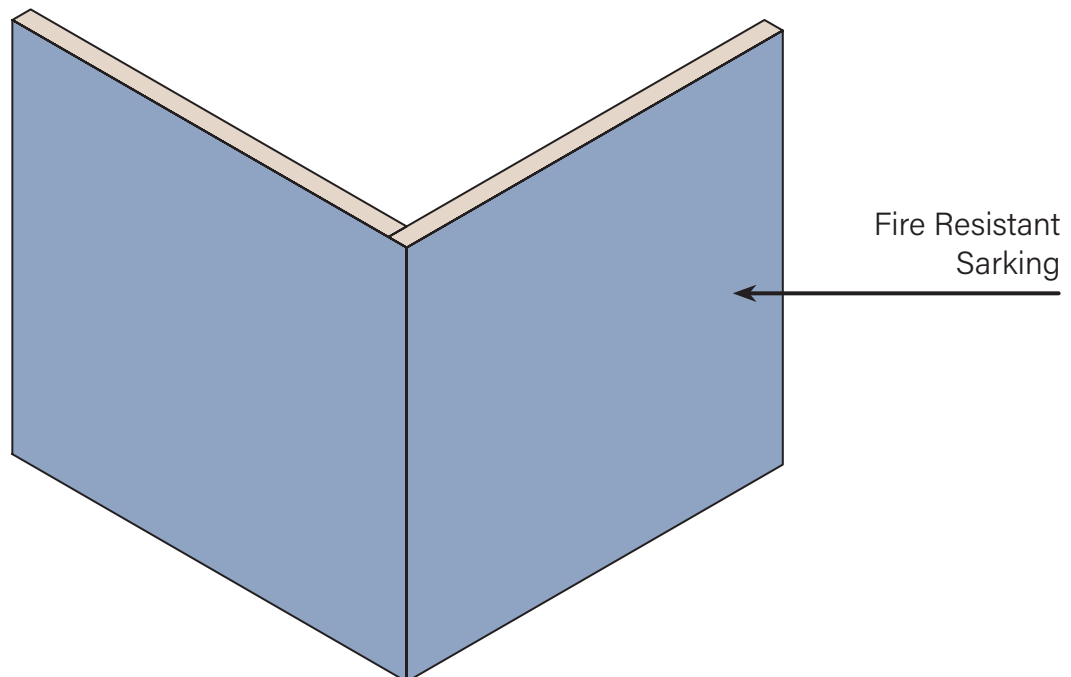


Exterior Side

2

## Apply Fire Resistant Sarking

Install fire resistant sarking in accordance with the manufacturer's specifications for construction in fire rated zones, ensuring it is properly sealed around all windows and openings.

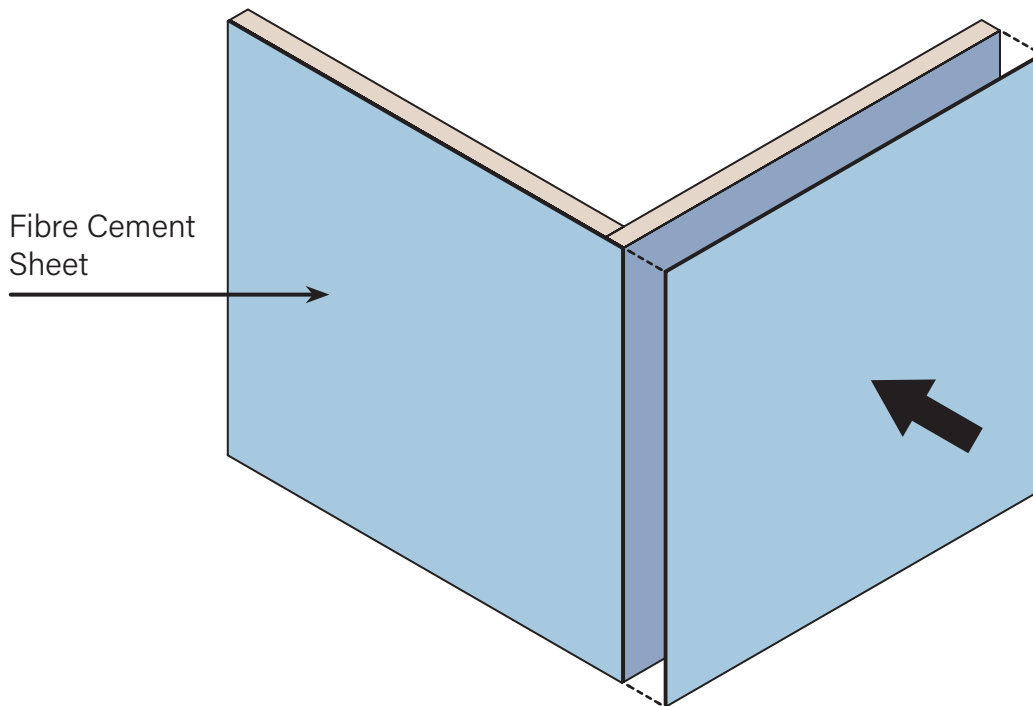


Exterior Side

3

### Install 9mm Fibre Cement Sheet

Install fibre cement sheeting with a minimum thickness of 9mm over the entire wall, in accordance with the manufacturer's specifications for fire rated construction.

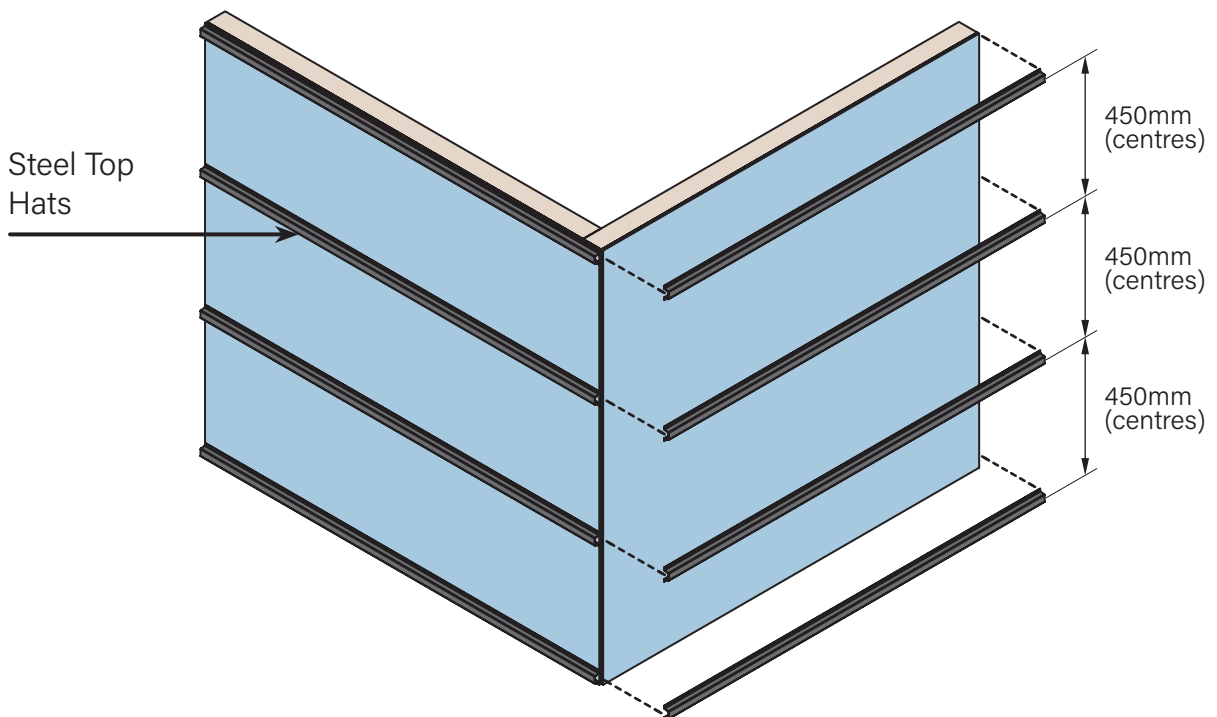


Exterior Side

4

### Install Steel Top Hats

For vertical cladding applications, install top hats horizontally; for horizontal cladding applications, install top hats vertically. Space top hats at 450mm centres to provide adequate support, and install them in accordance with the manufacturer's specifications.

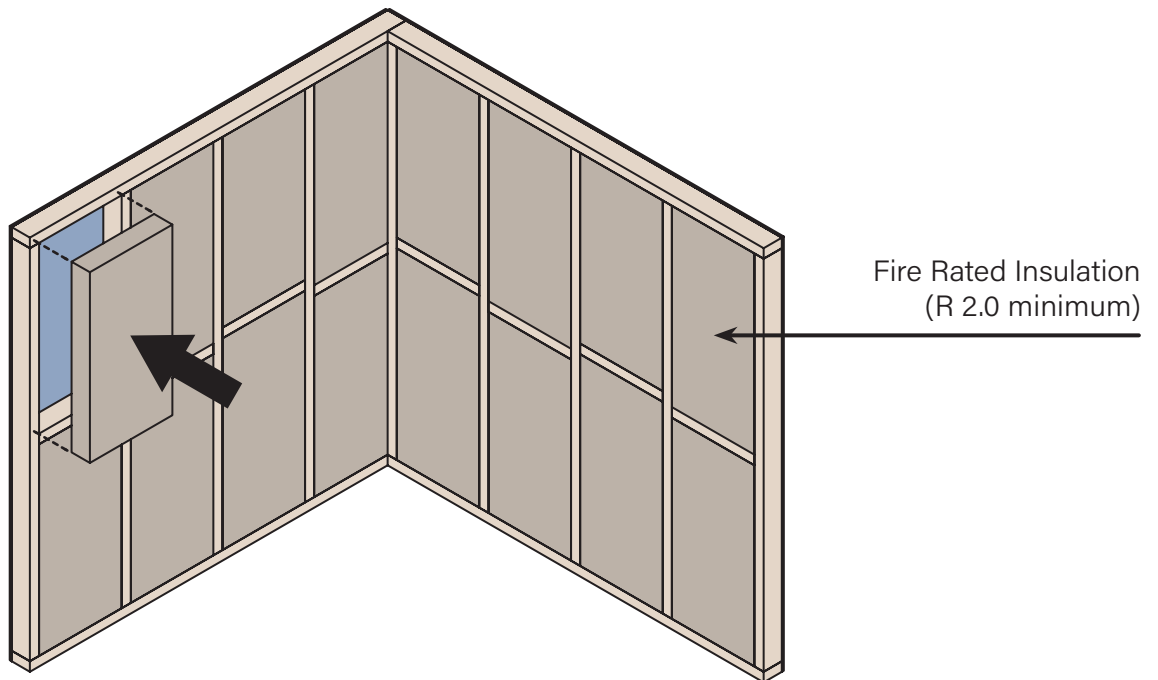


Exterior Side

5

### Install Fire Rated Insulation

Install fire rated insulation batts with an R-value of 2.0 or higher, in accordance with the manufacturer's specifications.

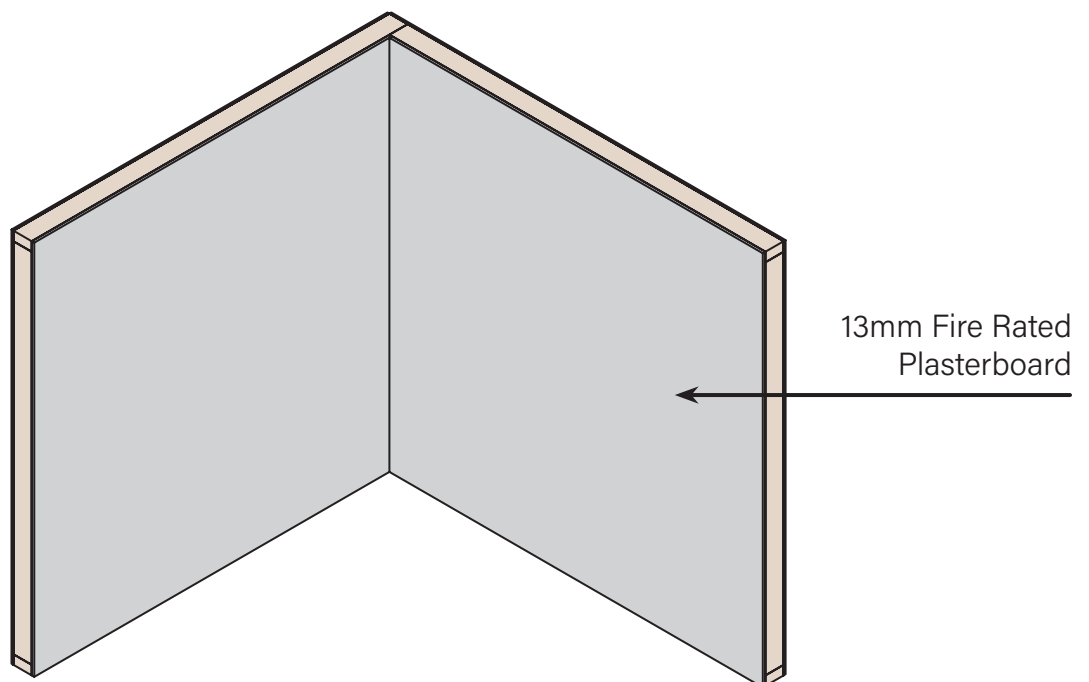


Interior Side

6

### Install 13mm Fire Rated Plasterboard

Install 13mm fire rated plasterboard in accordance with the manufacturer's specifications to achieve an FRL of -/30/30.



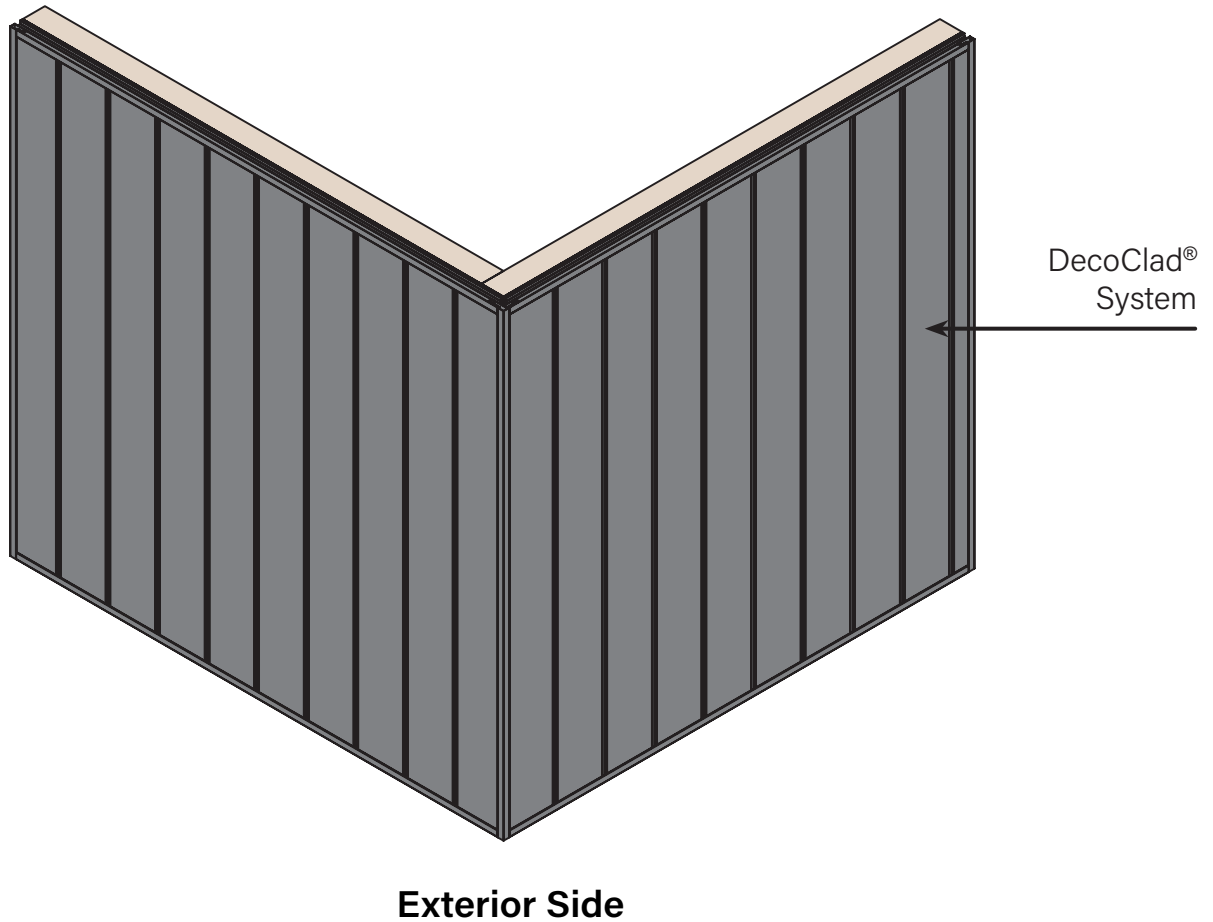
Interior Side

### 7

#### Install DecoClad® System

Once steps 1–6 are complete, the substructure is ready for the DecoClad® system to be installed.

Refer to the DecoClad® installation guide for details on how to install DecoClad® cladding.



If this installation guide and the DecoClad® installation guide have been followed, the installation will meet AS 1530.4 and comply with the testing methods used in the FRL-/30/30 assessment conducted by Ignis Labs (Test IGNL-9337-04C-I01-R00).

For further details please contact your local Deco representative or Deco Australia head office.